

PowerShot SX720 HS



Your Holiday Superzoom

The PowerShot SX720 HS is Canon's slimmest and most powerful superzoom camera yet. It combines a 20.3 MP CMOS sensor with DIGIC 6 processing to power Canon's HS System, delivering stunning stills and Full HD movies even when the lighting is compromised – whether you are meandering through cities or dining al fresco, at sunrise or sunset.

Quality Images

The combination of a large 20.3 Megapixel CMOS sensor & DIGIC 6, delivers sharp, clear images - even in low light.

High Zoom

Built around a versatile ultra-wide angle 40x optical zoom (24-960mm), with 80x ZoomPlus, the pocketable and lightweight camera is packed into a body just 35.6mm thick, making it the perfect travel companion for capturing all the action, both near and far.

Superior movie performance

Remember breath-taking moments at the touch of a button in realistic Full HD movies, up to 60p, in MP4 format. Canon's Dynamic IS, combined with Auto Level, delivers rock-steady footage, even when moving at pace or when shooting from tricky angles by correcting camera shake over five axes.

Connect & Share

Built in Wi-Fi and NFC plus a Mobile Device Connect Button allow you to instantly connect to your preferred device and share your images to your favourite social network sites.



no one sees it like you

Canon

PowerShot SX720 HS

Your Holiday Superzoom

FULL
HD



Bring your memories to life as you experience videos in Full HD quality


Creative Shot



Expand your creative photography skills through applying a range of artistic presets such as toy camera or fish eye effect





With built in NFC and Wi-Fi its so easy to share your happy snaps to your favourite social media platforms

USB
Charging



Connect to your computer to charge the battery via USB. Alternatively, a standalone battery charger is supplied


Remote Shooting



Capture images remotely and view live images from the camera via your phone with remote shooting


Story Highlights



Automatically compile images and videos captured in Hybrid Auto mode to create an unforgettable narrative

no one sees it like you

Canon

PowerShot SX720 HS

Your Holiday Superzoom

24mm
WIDE
40x

The 40x optical zoom, 24-960mm equivalent wide angle lens allows you to capture more in your frame making the SX720 HS an all in one compact superzoom camera.

20.3 MEGA
PIXELS
HIGH-SENSITIVITY
CMOS

A large 20.3 Megapixel CMOS sensor enables incredible image quality even in low light situations.



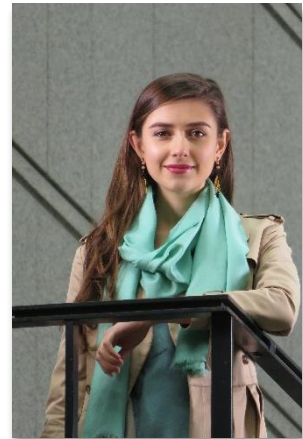
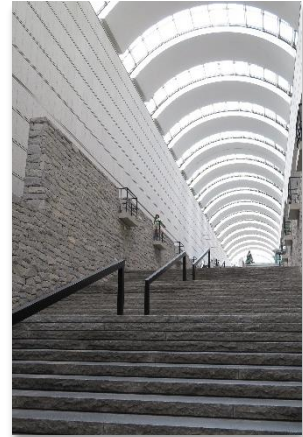
Fast, powerful and innovative, DIGIC 6 is Canon's advanced imaging processor. It commands cutting-edge technologies to deliver stunning quality, seamless performance and intuitive operation.



The Canon HS SYSTEM is fuelled by the processing power of DIGIC 6, partnered by an advanced High-Sensitivity CMOS sensor featuring larger pixels to capture more light and deliver sharp, detailed images.



Shoot your images on the SX720 HS and store them easily on the Connect Station CS100, with one touch NFC. The Connect Station CS100 is a 1TB storage device, equipped with Wi-Fi and NFC, which you can use to store images and display them on a big screen TV.



no one sees it like you

Canon

Technical Specifications

PowerShot SX720 HS

IMAGE SENSOR	
Type	1/2.3 type back-illuminated CMOS
Effective Pixels	Approx. 20.3M [14]
Effective / Total Pixels	Approx. 21.1M
Colour Filter Type	Primary Colour
IMAGE PROCESSOR	
Type	DIGIC 6 with iSAPS technology
LENS	
Focal Length	4.3 – 172.0 mm (35 mm equivalent: 24 – 960 mm)
Zoom	Optical 40x ZoomPlus 80x Digital approx. 4.0x (with Digital Tele-Converter Approx. 1.6x or 2.0x [1]) Combined approx. 160x
Maximum f/number	f/3.3 – f/6.9
Construction	13 elements in 11 groups (1 Hi-UD lens, 3 UD lenses, 2 double-sided aspherical lenses, 1 single-sided aspherical lens)
Image Stabilisation	Yes (lens shift-type), Approx. 3.0-stop [13]; Intelligent IS plus 5-axis Advanced Dynamic IS
FOCUSING	
Type	TTL
AF System/ Points	AiAF (Face Detection / 9-point), 1-point AF (fixed to centre)
AF Modes	Single, Continuous, Servo AF/AE [6], Tracking AF,
AF Point Selection	Size (Normal, Small)
AF Lock	Yes
AF Assist Beam	Yes
Manual Focus	Yes, plus MF Peaking
Closest Focusing Distance	1 cm (W) from front of lens in Macro
EXPOSURE CONTROL	
Metering modes	Evaluative (linked to Face Detection AF frame), Centre-weighted average, Spot (Centre)
AE Lock	Yes
Exposure Compensation	+/- 2 EV in 1/3 stop increments. Enhanced i-Contrast for automatic dynamic range correction
ISO sensitivity	AUTO, 80, 100, 200, 400, 800, 1600, 3200
SHUTTER	
Speed	1 – 1/3200 sec. (factory default) 15 – 1/3200 sec. (total range – varies by shooting mode)
WHITE BALANCE	
Type	TTL
Settings	Auto (including Face Detection WB), Daylight, Cloudy, Tungsten, Fluorescent, Fluorescent H, Custom. Multi-area WB correction available in Smart Auto
COLOUR MATRIX	
Type	sRGB
LCD MONITOR	
Monitor	7.5 cm (3.0") LCD (TFT), approx. 922,000 dots, sRGB colour reproduction
Coverage	Approx. 100%
Brightness	Adjustable to one of five levels. Quick-bright LCD

FLASH	
Modes	Auto, Manual Flash On / Off, Slow Synchro
Slow Sync Speed	Yes. Fastest speed 1/2000 sec.
Red-Eye Reduction	Yes
Flash Exposure Compensation	+/- 2 EV in 1/3 stop increments. Face Detection FE, Safety FE, Smart Flash Exposure
Flash Exposure Lock	Yes
Manual Power Adjustment	3 levels with internal flash
Built-in Flash Range	50 cm – 3.5 m (W) / 1.4 m – 2.0 m (T)
SHOOTING	
Modes	Smart Auto (58 scenes detected), Hybrid Auto, Creative Shot, Program AE, Shutter priority AE, Aperture priority AE, Manual, Live View Control, Sports, SCN (Portrait, Smart Shutter (Smile, Wink Self-Timer, FaceSelf-Timer), Handheld Night Scene, Low Light (5.0 MP), Fireworks), Creative Filters (Fish-eye Effect, Miniature Effect, Toy Camera Effect, Monochrome, Soft Focus, Super Vivid, Poster Effect), Movie
Modes in Movie	My Colors (My Colors Off, Vivid, Neutral, Sepia, Black & White, Positive Film, Lighter Skin Tone, Darker Skin Tone, Vivid Blue, Vivid Green, Vivid Red, Custom Color)
Photo Effects	Single, Auto Drive, Continuous, Continuous with AF, Self-Timer
Drive modes	Approx. 5.9 shots/s until memory card becomes full [12]
Continuous Shooting	with AF: Approx. 4.6 shots/s [3][4] with Live View: Approx. 4.6 shots/s [3][4] Smart Auto (58 scenes detected), Hybrid Auto, Creative Shot, Program AE, Shutter priority AE, Aperture priority AE, Manual, Live View Control, Sports, SCN (Portrait, Smart Shutter (Smile, Wink Self-Timer, FaceSelf-Timer), Handheld Night Scene, Low Light (5.0 MP), Fireworks), Creative Filters (Fish-eye Effect, Miniature Effect, Toy Camera Effect, Monochrome, Soft Focus, Super Vivid, Poster Effect), Movie
RECORDING PIXELS / COMPRESSION	
Image Size	4:3 - (L) 5184 x 3888, (M1) 3648 x 2736, (M2) 2048 x 1536, (S) 640 x 480 16:9 - (L) 5184 x 2912, (M1) 3648 x 2048, (M2) 1920 x 1080, (S) 640 x 360 3:2 - (L) 5184 x 3456, (M1) 3648 x 2432, (M2) 2048 x 1368, (S) 640 x 424 1:1 - (L) 3888 x 3888, (M1) 2736 x 2736, (M2) 1536 x 1536, (S) 480 x 480
Compression	Superfine, Fine
Movies	(Full HD) 1920 x 1080, 59.94 / 29.97 fps, (HD) 1280 x 720, 29.97 fps, (L) 640 x 480, 29.97 fps
Movie Length	(Full HD & HD) Up to 4 GB or 29 min 59 s [7] (L) Up to 4 GB or 1 hour [4]
FILE TYPES	
Still Image Type	JPEG compression, (Exif 2.3 [Exif Print] compliant) / Design rule for Camera File system, Digital Print Order Format [DPOF] Version 1.1 compliant
Movies	MP4 [Video: MPEG-4 AVC / H.264, Audio: MPEG-4 AAC-LC (stereo)]

no one sees it like you

Canon

PowerShot SX720 HS

DIRECT PRINT Canon Printers PictBridge	Canon SELPHY Compact Photo Printers and Canon Inkjet Printers supporting PictBridge Yes (via USB or Wireless LAN)
OTHER FEATURES GPS Red-Eye Correction Intelligent Orientation Sensor Histogram Playback zoom Self Timer Menu Languages	GPS via mobile (linked to compatible smartphone) Yes, during shooting and playback Yes, with Auto Rotate Yes Approx. 2x – 10x Approx. 2 or 10 sec. or Custom English, German, French, Dutch, Danish, Finnish, Italian, Greek, Norwegian, Portuguese, Russian, Swedish, Spanish, Ukrainian, Polish, Czech, Hungarian, Turkish, Simplified Chinese, Chinese (traditional), Japanese, Korean, Thai, Arabic, Romanian, Farsi, Hindi, Malay, Indonesian, Vietnamese, Hebrew
INTERFACE Computer Other Computer/Other	Hi-Speed USB (MTP, PTP) dedicated connector (Mini-B compatible) HDMI Micro Connector, A/V output (PAL/NTSC) Wi-Fi (IEEE802.11b/g/n), (2.4 GHz only), with Dynamic NFC support [11]
MEMORY CARD Type	SD, SDHC, SDXC (UHS Speed Class 1 compatible)
SUPPORTED OPERATING SYSTEM PC & Macintosh	Windows 10 / 8.1 / 8 / 7 SP1 [18] Mac OS X 10.9 / 10.10 / 10.11 For Wi-Fi connection to a PC: Windows 10 / 8.1 / 8 / 7 SP1 Mac OS X 10.9 / 10.10 For Image Transfer Utility: Windows 10 / 8.1 / 8 / 7 SP1 Mac OS X 10.9 / 10.10 / 10.11
SOFTWARE Other	CameraWindow DC Map Utility Image Transfer Utility Camera Connect app available on iOS and Android devices

POWER SOURCE Batteries Battery life A/C Power Supply	Rechargeable Li-Ion Battery NB-13L (battery and charger supplied) Approx. 250 shots Eco Mode: Approx. 355 shots Playback Mode: Approx. 300 min Charging via USB available with Compact Power Adapter CA-DC30E [17] or other typical USB charging methods
ACCESSORIES Power Supply & Battery Chargers Other	Compact Power Adapter CA-DC30E Battery Charger CB-2LHE Rechargeable Li-Ion Battery NB-13L Interface cable IFC-600PCU
PHYSICAL SPECIFICATIONS Operating Environment Dimensions (WxHxD) Weight	0 – 40° C, 10 – 90% humidity 109.7 x 63.8 x 35.7 mm Approx. 270 g (including battery and memory card)

All data is based on Canon standard testing methods (according to CIPA Standards) except where indicated.

Subject to change without notice.

[1] Depending on the image size selected.

[3] Under conditions where the flash does not fire.

[4] Depending on memory card speed / capacity / compression setting.

[6] Some settings limit availability.

[7] The following Speed Class memory cards are required for maximum record time: (HD) 1280 x 720 Speed Class 4 or above. (Full HD) 1920 x 1080 Speed Class 6 or above. (Frame) 1280 x 720 Speed Class 6 or above.

[11] Wi-Fi use may be restricted in certain countries or regions. Wi-Fi support varies by device and region. For more information visit www.canon-europe.com/wirelesscompacts

[12] Sustained continuous shooting function requires compatible SDHC/SDXC UHS Speed Class 1 memory card, total number of frames captured varies depending on shooting subject.

[13] Values at maximum optical focal length. Cameras whose focal length exceeds 350 mm (35 mm equivalent) are measured at 350 mm.

[14] Image processing may cause a decrease in the number of pixels.

[17] Charging via USB requires Interface Cable IFC-600PCU (Sold separately) or similar cable with USB Micro-B to USB type-A connectors. Charging time varies depending on the remaining battery power.

[18] Software applications compatible with Windows 10 in Windows 10 Desktop Mode only

For more information visit
canon.com.au
canon.co.nz

no one sees it like you

Canon