

# EOS 80D

Photographer: @itchban

## CHALLENGE YOUR CREATIVE POTENTIAL

The EOS 80D is a powerful, fully equipped DSLR providing you with everything you need at your fingertips to advance your photography and video skills. Ideal for experimenting with different photography genres and styles, the EOS 80D is highly customisable and shoots with exceptional speed. Combining leading imaging technologies – including a new 24.2 megapixel CMOS sensor and DIGIC 6 processor, alongside a new 45 all cross-type point AF system and fast responsive 7 fps shooting rate – the EOS 80D is a versatile camera for capturing striking stills and Full HD movies.

### Excel in all areas of photography and video

Whatever subject you're looking to explore – from sports, to wildlife, landscapes or action – the EOS 80D is extremely responsive, excelling in capturing everything in incredible, intricate detail. The new 24.2 megapixel CMOS sensor provides stunning clarity and the freedom to crop, while the new 45 all cross-type point AF system and 7 fps shooting can freeze action with ultimate precision. Whether you're creating a travel vlog, or cinematic-style movie, the EOS 80D offers total flexibility with Full HD movie shooting including ability to shoot at 60p - perfect for slowing down the action.

### A camera that adapts to you

The EOS 80D has been meticulously crafted to provide photographers with everything they need. The instinctiveness of the camera's design means you can easily customise your shooting experience, with conveniently-placed controls giving you access to the most commonly used modes and settings. For pin-point focusing, AF points are individually selectable or grouped into areas, giving you greater control over composition regardless of where your subject is in the frame.



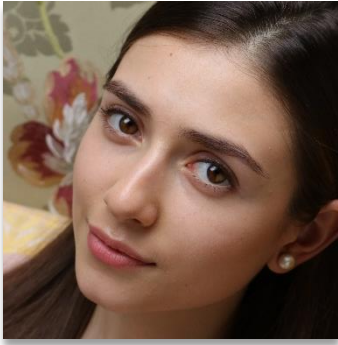
*no one sees it like you*

**Canon**

# EOS 80D

CHALLENGE YOUR CREATIVE POTENTIAL

**24.2** MEGA  
PIXELS  
CMOS



A new 24.2 Megapixel APS-C size CMOS sensor delivers sharp image clarity & low noise images at high sensitivities up to ISO16000 for still images and ISO 12800 for movies

Cross-type  
Max. **45** -point  
AF



The new 45 all cross-type point high precision AF system includes AF points which are individually selectable or grouped into areas, giving you greater control over composition regardless of where your subject is in the frame

Upto  
**7.0**  
Frames  
Per Sec



The EOS 80D delivers high-speed continuous shooting at up to 7 frames per second whilst maintaining AF performance so you can be confident in catching fast moving action

  
Wi-Fi / NFC



With built in NFC & Wi-Fi its easy to share your images to your favourite social media platforms. You can also shoot remotely via your smartphone or tablet using the Canon Camera Connect App

**ISO**  
16000  
12800



Designed to shoot in varying light conditions, the camera has a native ISO 100-16,000 range, expandable to ISO 25,600, and the AF system will continue to work even under moonlight (-3EV).

  
EOS Movie  
FULL HD



Whether you're creating a travel vlog, or cinematic-style movie, the EOS 80D offers total flexibility with Full HD movie shooting including 60p

*no one sees it like you*

**Canon**





Fast, powerful and innovative, Canon's advanced DIGIC 6 imaging processor commands cutting-edge technologies to deliver stunning quality, fast performance and intuitive operation



You can find new angles high or low with the 3.0" Vari-angle ClearView LCD II screen. Touch screen interface makes it easy and intuitive to change settings, select focus points and review images



The 7560-pixel RGB+IR metering sensor measures both visible light and invisible infra-red light, giving accurate exposures



Dual Pixel CMOS AF delivers fast and smooth AF as well as exceptional tracking performance when shooting in Live View and movie mode



Choose a shooting interval and a defined number of shots (up to 3600) and the EOS 80D will shoot a series of still images and then save them as a time lapse movie within the camera



The Intelligent Viewfinder with approx 100% coverage lets photographers shoot and change settings whilst looking through the viewfinder so you won't need to take your eyes off the action



Expand your creative photography skills through applying a range of artistic presets such as toy camera, art bold, vivid or fish eye effect



The Integrated Speedlite Transmitter provides optical control of remote Canon Speedlites opening up a new world of wireless flash shooting



Built in High Dynamic Range mode captures stunning detail from shadows to highlights and a range of image effects can be added to enhance creative outputs

*no one sees it like you*



# Technical Specifications

# EOS 80D

|                           |  |
|---------------------------|--|
| <b>IMAGE SENSOR</b>       |  |
| Type                      | 22.3mm x 14.9 mm CMOS  |
| Effective Pixels          | Approx. 24.20 megapixels   |
| Total Pixels              | Approx. 25.80 megapixels   |
| Aspect Ratio              | 3:2  |
| Low-Pass Filter           | Built-in/Fixed with fluorine coating   |
| Sensor Cleaning           | EOS integrated cleaning system   |
| Colour Filter Type        | Primary Colour   |
| <b>IMAGE PROCESSOR</b>    |  |
| Type                      | DIGIC 6  |
| <b>LENS</b>               |  |
| Lens Mount                | EF/EF-S  |
| Focal Length              | Equivalent to 16x the focal length of the lens   |
| <b>FOCUSING</b>           |  |
| Type                      | TTL-CT-SiR with a CMOS sensor  |
| AF System/ Points         | 45 cross-type AF points (45 f/5.6 cross-type AF points, 27 f/8 points [9 cross-type], centre point is f/2.8 and f/5.6 dual cross-type) (1)   |
| AF working range          | EV -3 - 18 (at 23° C & ISO100)   |
| AF Modes                  | AI Focus<br>One Shot<br>AI Servo   |
| AF Point Selection        | Automatic selection: 45 point AF Manual selection: Single point AF Manual selection: Zone AF<br>Manual selection: Large Zone AFAF points can be selected separately for vertical and horizontal shooting   |
| Selected AF point display | Indicated by a transmissive LCD in viewfinder and Quick Control screen   |
| Predictive AF (7)         | Yes, up to 8m  |
| AF Lock                   | Locked when shutter button is pressed half way in One Shot AF mode.  |
| AF Assist Beam            | Intermittent firing of built-in flash or emitted by optional dedicated Speedlite   |
| AF Microadjustment        | C.Fn II-16<br>+/- 20 steps (wide and tele setting for Zooms)<br>Adjust all lenses by same amount<br>Adjust up to 40 lenses individually<br>Adjustments remembered for lens by serial number<br>Selected on lens  |
| <b>Manual Focus</b>       |  |
| <b>EXPOSURE CONTROL</b>   |  |
| Metering modes            | 7560-pixel RGB+IR metering sensor<br>Metering with the area divided into 63 segments (9x7)<br>(1) Evaluative metering (linked to all AF points)<br>(2) Partial metering (approx. 6.0% of viewfinder)<br>(3) Spot metering (approx. 3.8% of viewfinder)<br>(4) Center-weighted average metering |
| Metering Range            | EV 1-20 (at 23° C with 50mm f/1.4 lens ISO100)   |
| AE Lock                   | Auto: In One-shot AF mode with evaluative metering exposure is locked when focus is achieved.<br>Manual: By AE lock button in creative zone modes.   |
| Exposure Compensation     | +/-5 EV in 1/3 or 1/2 stop increments (can be combined with AEB).  |
| AEB                       | 2, 3, 5 or 7 Shots +/-3 EV 1/3 or 1/2 stop increments  |
| ISO Sensitivity (8)       | Auto (100-16000), 100-16000 (in 1/3-stop or whole stop increments) ISO can be expanded to H: 25600 During Movie shooting: Auto (100-12800), 100-12800 (in 1/3-stop or whole stop increments) ISO can be expanded to H: 25,600  |
| <b>SHUTTER</b>            |  |
| Type                      | Electronically-controlled focal-plane shutter  |
| Speed                     | 30-1/8000 sec (1/2 or 1/3 stop increments), Bulb (Total shutter speed range. Available range varies by shooting mode)  |

|   |  |
|---|--|
| <b>WHITE BALANCE</b>                    |  |
| Type                                    | Auto white balance with the imaging sensor   |
| Settings                                | AWB (Ambience priority, White priority), Daylight, Shade, Cloudy, Tungsten light, WhiteFluorescent light, Flash, Custom, Colour Temperature Setting. White balance compensation: 1. Blue/Amber +/-92. Magenta/ Green +/-9  |
| Custom White Balance                    | Yes, 1 setting can be registered   |
| WB Bracketing                           | +/-3 levels in single level increments<br>3 bracketed images per shutter release.<br>Selectable Blue/Amber bias or Magenta/Green bias.   |
| <b>VIEWFINDER</b>                       |  |
| Type                                    | Pentaprism   |
| Coverage (Vertical/Horizontal)          | Approx. 100%   |
| Magnification                           | Approx. 0.95x (4)  |
| Eyepoint                                | Approx. 22mm (from eyepiece lens centre)   |
| Dioptr Correction                       | -3 to +1 m-1 (dioptr)  |
| Focusing Screen                         | Fixed (Transmissive LCD screen)  |
| Mirror                                  | Quick-return half mirror (Transmission: reflection ratio of 40:60, no mirror cut-off with EF600mm f/4 or shorter)  |
| Viewfinder Information                  | AF information: AF points, focus confirmation, AF area selection mode Exposure information: Shutter speed, aperture value, ISO speed (always displayed), AE lock, exposure level/compensation, spot metering circle, exposure warning, AEB. Flash information: Flash ready, high-speed sync, FE lock, flash exposure compensation, red-eye reduction light. Image information: Card information, maximum burst (2 digit display), Highlight tone priority (D+). Composition information: Grid, Electronic level, Aspect Ratio. Other information: Battery check, Alert symbol, Flicker Detection |
| Depth of field preview                  | Yes, with Depth of Field preview button.   |
| Eyepiece shutter                        | On strap   |
| <b>LCD MONITOR</b>                      |  |
| Type                                    | Touch screen vari angle 7.7cm (3.0") 3:2 Clear View II TFT, approx. 1040K dots   |
| Coverage                                | Approx. 100%   |
| Viewing Angle (horizontally/vertically) | Approx. 170°   |
| Coating                                 | Anti-reflection, Solid Structure and Anti smudge   |
| Brightness Adjustment                   | Adjustable to one of seven levels  |
| Display Options                         | (1) Quick Control Screen<br>(2) Camera settings<br>(3) Dual Axis Electronic Level  |
| <b>FLASH</b>                            |  |
| Built-in Flash GN (ISO 100, meters)     | 12   |
| Built-in Flash Coverage                 | up to 17mm focal length (35mm equivalent: 28mm)  |
| Built-in Flash recycle time             | Approx. 3 seconds  |
| Modes                                   | Auto, Manual flash, Integrated Speedlite Transmitter   |
| Red-Eye Reduction                       | Yes - with red-eye reduction lamp  |
| X-sync                                  | 1/250sec   |
| Flash Exposure Compensation             | +/- 3EV in 1/2 or 1/3 increments   |
| Flash Exposure Bracketing               | Yes, with compatible External Flash  |
| Flash Exposure Lock                     | Yes  |
| Second Curtain Synchronisation          | Yes  |
| HotShoe/ PC terminal                    | Yes/ No  |
| External Flash Compatibility            | E-TTL II with EX series Speedlites, wireless multi-flash support   |
| External Flash Control                  | via camera menu screen   |

no one sees it like you

**Canon**

# Technical Specifications

# EOS 80D

|                                 |  |
|---------------------------------|--|
| <b>SHOOTING</b>                 |  |
| Modes                           | Scene Intelligent Auto (Stills and Movie), No Flash, Creative Auto, SCN (Portrait, Landscape, Close-up, Sports, Night Portrait, Handheld Night Scene, HDR Backlight Control, Food, Kids, Candlelight), Creative filters, Program AE, Shutter priority AE, Aperture priority AE, Manual (Stills and Movie), Bulb, Custom  |
| Picture Styles                  | Auto, Standard, Portrait, Landscape, Fine Detail, Neutral, Faithful, Monochrome, User Defined (x3)   |
| Colour Space                    | sRGB and Adobe RGB   |
| Image Processing                | Highlight Tone Priority<br>Auto Lighting Optimizer (4 settings) Long exposure noise reduction<br>High ISO speed noise reduction (4 settings)<br>Multi Shot Noise Reduction<br>Auto Correction of Lens Peripheral illumination and Chromatic aberration correction<br>Creative filters (Grainy B/W, Soft focus, Fish-eye effect, Art bold effect, Water painting effect, Toy camera effect, Miniature effect)<br>Multi-exposure<br>RAW image processing - during image Playback only<br>Resize to M or S1, S2, S3 |
| Drive modes                     | Single, Continuous L, Continuous H, Self timer (2s+remote, 10s +remote), Silent single shooting, Silent continuous shooting  |
| Continuous Shooting             | Max. Approx. 7fps. (speed maintained for up to 110 images (JPEG)) (10) (with UHS-I card), 25 images (RAW) (with UHS-I card)) (2) (10)  |
| <b>LIVE VIEW MODE</b>           |  |
| Type                            | Electronic viewfinder with image sensor  |
| Coverage                        | Approx. 100% (horizontally and vertically)   |
| Frame Rate                      | 30 fps   |
| Focusing                        | Manual Focus (Magnify the image 5x or 10x at any point on screen) Autofocus: Dual Pixel CMOS AF (Face detection and Tracking AF, FlexiZone-Multi, FlexiZone-Single), Tracking sensitivity (-3 to +3) and Movie Servo AF Speed (-7 to +2)   |
| Metering                        | Real-time evaluative metering with image sensor. Evaluative metering, partial metering, spot metering, center-weighted average metering.   |
| Display Options                 | Grid overlay (x3), Histogram, Electronic level   |
| <b>FILE TYPE</b>                |  |
| Still Image Type                | JPEG: Fine, Normal (Exif 2.30 compliant) / Design rule for Camera File system (2.0), RAW: RAW (14bit, Canon original RAW 2nd edition), Digital Print Order Format (DPOF) Version 1.1 compliant   |
| RAW+JPEG simultaneous recording | Yes, any combination of RAW + JPEG, M-RAW + JPEG, S-RAW + JPEG possible.   |
| Image Size                      | JPEG 3:2: (L) 6000 x 4000, (M) 3984 x 2656, (S1) 2976 x 1984, (S2) 1920x1280, (S3) 720x480<br>JPEG 4:3: (L) 5328x4000, (M) 3552x2664, (S1) 2656x1992, (S2) 1696x1280, (S3) 640x480<br>JPEG 16:9: (L) 6000x3368, (M) 3984x2240, (S1) 2976x1680, (S2) 1920x1080, (S3) 720x408<br>JPEG 1:1: (L) 4000x4000, (M) 2656x2656, (S1) 1984x1984, (S2) 1280x1280, (S3) 480x480<br>RAW: (RAW) 6000x4000, (M-RAW) 4500x3000, (S-RAW) 3000x2000  |
| Movie Type                      | MOV / MP4 (Video: H.264 Intra frame / inter frame, Sound: Linear PCM / AAC, recording level can be manually adjusted by user)  |
| Movie Size                      | 1920 x 1080 (59.94, 50 fps) inter-frame<br>1920 x 1080 (29.97, 25, 23.98 fps) intra or inter frame<br>1920 x 1080 (29.97, 25) lite inter-frame<br>1280 x 720 (59.94, 50 fps) inter-frame<br>1280 x 720 (29.97, 25) lite inter-frame  |
| Movie Length                    | Max duration 29min 59sec, Max file size 4GB (If file size exceeds 4GB a new file will be created automatically)  |
| Folders                         | New folders can be manually created and selected   |
| File Numbering                  | (1) Consecutive numbering<br>(2) Auto reset<br>(3) Manual reset  |

|                                |   |
|--------------------------------|---|
| <b>OTHER FEATURES</b>          |   |
| Custom Functions               | 26 Custom Functions   |
| Metadata Tag                   | User copyright information (can be set in camera)<br>Image rating (0-5 stars)   |
| LCD Panel / Illumination       | Yes/Yes   |
| Intelligent Orientation Sensor | Yes   |
| Water / Dust resistance        | Yes   |
| Sound Memo                     | No  |
| Playback zoom                  | 1.5x - 10x  |
| Display Formats                | (1) Single image with information (2 levels)<br>(2) Single image<br>(3) 4 image index<br>(4) 9 image index<br>(5) 36 image index<br>(6) 100 image index<br>(7) Jump Display<br>(8) Movie edit   |
| Slide Show                     | Image selection: All images, by Date, Folder, Movies, Stills, Rating<br>Playback time: 1/2/3/5/10/20 seconds<br>Repeat: On/Off<br>Background music: On/Off<br>Transition effect: Off, Slide in 1, Slide in 2, Fade 1, Fade 2, Fade 3                                  |
| Histogram                      | Brightness: Yes<br>RGB: Yes   |
| Highlight Alert                | Yes   |
| Image Erase/Protection         | Erase: Single image, All images in folder, Checkmarked images, unprotected images<br>Protection: Erase protection of one image at a time  |
| Menu Categories                | (1) Shooting menu (x6)<br>(2) Playback menu (x3)<br>(3) Setup menu (x4)<br>(4) Custom Functions menu<br>(5) My Menu   |
| Menu Languages                 | 25 Languages<br>English, German, French, Dutch, Danish, Portuguese, Finnish, Italian, Norwegian, Swedish, Spanish, Greek, Russian, Polish, Czech, Hungarian, Romanian, Ukrainian, Turkish, Arabic, Thai, Simplified Chinese, Traditional Chinese, Korean and Japanese |
| Firmware Update                | Update possible by the user.  |

no one sees it like you

**Canon**

# Technical Specifications

# EOS 80D

|                                    |  |
|------------------------------------|--|
| <b>INTERFACE</b>                   |  |
| Computer                           | Hi-Speed USB   |
| Other                              | Video output (PAL/ NTSC) (integrated with USB terminal), HDMI mini output (HDMI-CEC compatible), External microphone (3.5mm Stereo mini jack), Headphone socket (Stereo mini jack) |
| <b>DIRECT PRINT</b>                |  |
| Canon Printers                     | Canon Compact Photo Printers and PIXMA Printers supporting PictBridge  |
| PictBridge                         | Yes  |
| <b>STORAGE</b>                     |  |
| Type                               | SD, SDHC or SDXC (UHS-I) card  |
| <b>SUPPORTED OPERATING SYSTEMS</b> |  |
| PC & Macintosh                     | Windows 10 / 8.1 / 8 / 7(*) With Microsoft .NET Framework 4.5 is installed.<br>Mac OS X 10.9, 10.10, 10.11   |
| <b>SOFTWARE</b>                    |  |
| Image Processing                   | Digital Photo Professional 4.4.0 (RAW Image Processing)  |
| Other                              | EOS Utility<br>EOS Lens Registration Tool<br>EOS Web Service Registration Tool<br>EOS Sample Music<br>Picture Style Editor   |

|                                 |   |
|---------------------------------|---|
| <b>POWER SOURCE</b>             |   |
| Batteries                       | Rechargeable Li-Ion Battery LP-E6N (supplied), built in for date & settings   |
| Battery life                    | Approx. 960 (at 23° C, AE 50%, FE 50%) (5) Approx. 860 (at 0° C, AE 50%, FE 50%)  |
| Battery Indicator               | 6 levels + percentage   |
| Power saving                    | Power turns off after 1, 2, 4, 8, 15 or 30mins.   |
| Power Supply & Battery Chargers | AC Adapter AC-E6(N), DC coupler: DR-E6, Battery charger LC-E6, Car Battery charger CBC-E6   |
| <b>ACCESSORIES</b>              |   |
| Viewfinder                      | Eyecup Eb, E-series Dioptic Adjustment Lens, Eyepiece Extender EP-EX15II, Angle Finder C  |
| Case                            | Leather case EH21L  |
| Wireless File Transmitter       | Built in Wi-Fi transmission<br>Connectivity to Smart devices is possible with Android version 4.0-4.4/5.0-5.1 or iOS 7.1/8-8.3. NFC connectivity is possible only with compatible Android devices.<br>Remote Wi-Fi zoom operation of EF-S 18-135mm f/3.5-5.6 IS USM via the optional Power Zoom Adapter PZ-E1 is only possible on EOS 80D using a compatible smart device (as above) or while using supplied EOS Utility software |
| Lenses                          | All EF and EF-S lenses  |
| Flash                           | Canon Speedlites (90EX, 270EX II, 430EX II, 600EX, 600EX-RT, Macro-Ring-Lite, MR-14EX II, Macro Twin Lite MT-24EX, Speedlite Transmitter ST-E2, Speedlite Transmitter ST-E3-RT)   |
| Battery Grip                    | BG-E14  |
| Remote Controller/ Switch       | Remote Switch RS-60E3, Remote Controller RC-6   |
| Other                           | Hand Strap E2, GPS Receiver GP-E2   |
| <b>PHYSICAL SPECIFICATIONS</b>  |   |
| Body Materials                  | Polycarbonate resin with glass fiber  |
| Operating Environment           | 0 – 40° C, 85% or less humidity   |
| Dimensions (WxHxD)              | 139.0 x 105.2 x 78.5mm  |
| Weight (body only)              | Approx. 730g (CIPA testing standard, including battery and memory card)   |

All data is based on Canon standard testing methods (according to CIPA Standards) except where indicated.  
Subject to change without notice.

[1] Large/Fine (Quality 8) resolution

[2] Based on Canon's testing conditions, JPEG, ISO 100, Standard Picture Style. Varies depending on the subject, memory card brand and capacity, image recording quality, ISO speed, drive mode, Picture Style, Custom functions etc.

[4] with 50mm lens at infinity, -1m-1 dpt

[5] Based on the CIPA Standard and using the batteries and memory card format supplied with the camera, except where indicated

[7] with EF300mm f/2.8L IS USM at 50kph

[8] Recommended Exposure Index

[10] Maximum fps and buffer capacity may be reduced depending on the camera's settings and light level

[11] Number of cross-type points depends on the lens used

For more information visit  
[canon.com.au](http://canon.com.au)  
[canon.co.nz](http://canon.co.nz)

*no one sees it like you*

**Canon**